
Mathematical Approach to Determination of Optimum Oil Production Rate in Oil Rim Reservoirs

Obibuike Ubanozie Julian, Ekwueme Stanley Toochukwu^{*}, Ohia Nnaemeka Princewill, Igwilo Kevin Chinwuba, Igbojionu Anthony Chemazu, Kerunwa Anthony

Department of Petroleum Engineering, Federal University of Technology, Owerri (FUTO), Nigeria

Email address:

stanleyekwueme@yahoo.com (S.T. Ekwueme)

^{*}Corresponding author

To cite this article:

Obibuike Ubanozie Julian, Ekwueme Stanley Toochukwu, Ohia Nnaemeka Princewill, Igwilo Kevin Chinwuba, Igbojionu Anthony Chemazu, Kerunwa Anthony. Mathematical Approach to Determination of Optimum Oil Production Rate in Oil Rim Reservoirs. *Petroleum Science and Engineering*. Vol. 3, No. 2, 2019, pp. 60-67. doi: 10.11648/j.pse.20190302.14

Received: September 28, 2019; **Accepted:** October 25, 2019; **Published:** November 11, 2019

Abstract: Oil rim reservoirs present unique problems during production. This is because of the proximity of the water and/or gas to the oil in the pay zone leading to phase distortion due to pressure disequilibrium during production of the oil. The resultant effect is early water/gas breakthroughs which ultimately lead to increased well operational cost, damage to production equipment and eventually to early loss of the well. Production rate becomes crucial as it directly or indirectly affects the overall recovery efficiency from the well. Low rate production signifies longer well production period due to delayed breakthrough time but at the expense of higher well operational cost per unit volume of oil produced, while higher rate production signifies higher oil volume per unit cost of well operation but with increased risk of losing the well due to water/gas breakthrough. Operators produce at a rate deemed economic in order to make profits. Most economic rates are higher than the critical rate which is the rate considered that coning would be maximally delayed. To optimize production, it is necessary to recover most of the fluid from the reservoir before abandonment. Higher recovery factors means that less volume of fluid is left in the reservoir at abandonment. The optimum oil production rate is the best economic oil rate that would result to the highest recovery factor obtainable from that well. The question is what rate is considered optimal and how can it be calculated? This work presents a mathematical model solution for the calculation of the optimum oil production rate. It takes cognizance of the recovery factor and the time value of money and present an analytical model to calculate the optimum oil production rate. From the work the optimum oil production rate was calculated to be 918.63stb/d while the critical oil rate was calculated to be 20.17stb/d.

Keywords: Oil Rim, Optimum Oil Rate, Coning, Economic Rates

1 Introduction

An Oil rim reservoir is a reservoir with small oil columns. Most of the oil rim reservoirs are sandwiched between an overlain gas cap and an underlain aquifer. Producing from oil rim reservoirs has always been a challenge in the Oil and Gas Industry [1-3]. The threat of producing oil rim reservoirs comes from the strategic location of the oil in relation to the other reservoir fluids which pose serious operational and economic challenges using existing conventional methods of optimizing reservoir development. The presence of a wide range of uncertainty, the peculiar complexity in the

distribution of the resident fluids and geological strata geometry, have made efficient development and production of thin oil column a difficult task [4, 5].

Water and gas coning are the problems encountered in producing from oil rim reservoirs, where the production of water and gas from an oil rim reservoirs are common occurrence, which increase the cost of production, and reduce the efficiency of the depletion mechanisms and the overall recovery. One of the main reasons for coning is pressure drawdown [6-8]. A vertical well exhibits a large pressure drawdown near the wellbore, whereas horizontal well exhibits minimum pressure drawdown, thus horizontal wells provide option whereby pressure drawdown can be

minimized, coning tendencies can be minimized, and high oil production rates can be achieved. Two forces control the mechanism of water coning: (1) dynamic flow force (applied force), and (2) gravity force [9].

One of the techniques used to solve coning problem was to let the oil to be produced at a sufficiently low rate, such that coning of water and gas can be avoided, and only oil is produced. This low rate is called critical oil rate. The critical oil rate is defined as the maximum water-free production rate. Different theoretical correlations conflict and give different answers, probably due to the different assumptions which they consider, and many times the critical rates are too low, and for economic reasons, a well is frequently produced in field operations at a rate above critical rate. This results in production of water, gas as well as oil, which could result to low economic recovery. To overcome this problem, an extensive parametric sensitivity analysis of the various reservoir and fluid properties on water and gas coning was investigated and performed using numerical simulation to provide input data for developing a new predictive correlation needed to calculate breakthrough time and optimum oil rate based on optimizing economic recovery for both vertical and horizontal wells [10-12].

Optimizing recovery in this sense entails that the well be produced at the best and most optimal production rate. This requires first, the knowledge of the critical production rate, the economic rate, the breakthrough time for the economic rate. Note that in most cases the optimal recovery rate falls between the critical rate and the maximum recoverable rate for that well. Optimization in this sense is necessary because the critical rate is usually not economical and producing at very high rates leads to early fluid breakthrough which also leads to high production cost or early abandonment of the well, thereby leaving behind large volumes of oil in the reservoir [13, 14]. In view of this, a balance must be created between the cost of production (which is a function of years of production before abandonment), the volume of fluid recovered (which is a function of the production rate), and volume of fluid left in the reservoir as a result of abandonment due to coning [15].

1.1. Description of Terms

- a) The Critical Oil Rate: this is the maximum oil production rate without the concurrent production of the displacing fluid phase by coning. The displacing fluid phase could be water or gas or both.
- b) The Breakthrough Time: this is the time from the onset of production to the time the first displacing fluid arrives at the perforated intervals.
- c) The Economic Oil Rate: this is the production rate for which the project becomes economically feasible. Most critical rate are not economical, that is to say that they do not yield economic volumes of fluid to offset the production expenses when measured daily or annually. Thus economic rates are usually higher than the critical oil rates to enable the company to make profit. Usually when the well is produced at higher rates than the

critical rate then cones are expected to form earlier. When this happens, the displacing fluid will be produced causing additional production expense to cater for the displacing phase production. Thus, if you produce at a low rate, you are not maximizing profit and if you produce at a very high rate you will incur additional production expenses and might lose the well at an earlier time. The interest now is to calculate the rate that will not be too low such that profit would be maximized and would not be too high to incur greater additional production and expense coupled with early abandonment of well. This rate is what we term the optimal oil production rate.

- d) The Optimum Production Rate: This is the rate that will yield the highest revenue throughout the life of the well.
- e) The Lifting Cost: This is the cost of producing one barrel of crude from the well to the surface stock tank. It is expressed in dollars annually or daily. For the sake of simplicity, the lifting cost can be expressed in stock tank barrels (STB) of fluid produced. Thus mathematically:

$$\text{Total fluid recovered (Stb)} - \text{lifting cost (Stb)} = \text{total revenue (Stb)}$$
- f) The Abandonment Volume: this is quantity of oil left in the reservoir when the reservoir is considered not economically viable for continued production. In this case, the revenue from production is below economic margin when compared to the production expenses.

1.2. Assumptions

- i) The well is produced until breakthrough occurs and the well is abandoned. ii) the reservoir is finite, iii) the well is vertical iv) constant annual operating cost.

1.3. Equations Used in Coning Models

There are several established equations for coning available in literatures, they describe factors such as critical oil rate, breakthrough time etc. Some of the models are described below for vertical and horizontal wells.

1.3.1. Critical Oil Rate Equation

Several models have been developed for the critical oil rate. Some are for vertical wells while others are for horizontal wells.

1. Critical oil rate for vertical wells

For the sake of this work, the Chaperson model for critical oil rate shall be used. The equation is stated as follows

$$Q_{OC} = 0.0783X10^{-4} \frac{K_h(h-h_p)^2[\Delta\rho]q_c^*}{\mu_o\beta_o} \tag{1}$$

Where: Q_{oc} = critical oil rate, STB/day, k_h = horizontal permeability, md, $\Delta\rho = \rho_w - \rho_o$, density difference, lb/ft³, h = oil column thickness, ft, h_p = perforated interval, ft

And

$$q_c^* = 0.7311 + (1.943/\alpha'') \tag{2}$$

$$\alpha'' = \left(r_e/h \right) \sqrt{k_v/k_h} \quad (3)$$

2. Critical Oil Rate for Horizontal Wells

The Chaperson model for coning in horizontal well is given as follows

i. For water coning

$$Q_{OC} = 0.0783 \times 10^{-4} \left[\frac{Lq_c^*}{y_e} \right] (\rho_w - \rho_o) \frac{K_h [h - (h - D_b)]^2}{\mu_o \beta_o} \quad (4)$$

ii. For gas coning

$$Q_{OC} = 0.0783 \times 10^{-4} \left[\frac{Lq_c^*}{y_e} \right] (\rho_o - \rho_g) \frac{K_h [h - (h - D_t)]^2}{\mu_o \beta_o} \quad (5)$$

The above two equations are applicable under the following constraint:

$$1 \leq \alpha'' < 70 \text{ and } 2y_e < 4L$$

1.3.2. Breakthrough Time Equation

i. Breakthrough time equation for vertical well

We use The Sobocinski-Cornelius Method

$$t_{BT} = \frac{20325 \mu_o h \phi (t_D)_{BT}}{(\rho_w - \rho_o) k_v (1 + M^\alpha)} \quad (6)$$

Where: t_{BT} = time to breakthrough, days, ϕ = porosity, fraction, k_v = vertical permeability, md, M = water-oil mobility and is defined by:

$$M = \frac{(K_{rw})_{sor} \left(\frac{\mu_o}{\mu_w} \right)}{(K_{ro})_{swc} \left(\frac{\mu_w}{\mu_o} \right)} \quad (7)$$

With

(kro) swc = oil relative permeability at connate water saturation

(krw) sor = water relative permeability at residual oil saturation

$$(t_D)_{BT} = \frac{4Z + 1.75Z^2 - 0.75Z^3}{7 - 2Z} \quad (8)$$

$$Z = \frac{0.492 \times 10^{-4} (\rho_w - \rho_o) K_h h (h - h_p)}{\mu_o \beta_o Q_o} \quad (9)$$

Where: ρ = density, lb/ft³, K_h = horizontal permeability, md, Q_o = oil production rate, STB/day, h_p = perforated interval, ft, h = oil column thickness, ft

ii. The breakthrough time equation for Horizontal well

We used the Papatzacos' Method for calculating breakthrough time for horizontal well

The breakthrough time t_{BT} is given by

$$t_{BT} = \frac{22,758.528 h \phi \mu (t_D)_{BT}}{(\rho_w - \rho_o) k_v} \quad (10)$$

$$(t_D)_{BT} = 1 - (3q_D - 1) \ln \left(\frac{3q_D}{3q_D - 1} \right) \quad (11)$$

And

$$q_D = \frac{20,333.66 \mu_o \beta_o Q_o}{Lh(\Delta\rho) \sqrt{k_v k_h}} \quad (12)$$

$\Delta\rho = (\rho_w - \rho_o)$ for water coning

$\Delta\rho = (\rho_o - \rho_g)$ for gas coning

Where, t_{BT} = time to water breakthrough as expressed in days, ρ_o = oil density, lb/ft³, ρ_w = water density, lb/ft³, ρ = density, lb/ft³, k_v = vertical permeability, md, k_h = horizontal permeability, md, h = oil zone thickness, ft, L = length of horizontal well.

2. Methods

2.1. Mathematical Model Development

For us to model the scenario let us define some parameters

Let: q_r = the desired oil production rate in stb/d, t_{BT} = the break through time in years, n = number of operational days in a year, usually 365 days, C = the lifting cost of oil expressed in stb/d, P_i = profit per year realized before breakthrough in dollars

If we conduct a mathematical analyzed then the total profit realized for a given flowrate per year before breakthrough is given by

$$P_i = n(q_r - C) \quad (13)$$

For a 365 operational days per year, the equation becomes

$$P_i = 365(q_r - C) \quad (14)$$

The total undiscounted profit before breakthrough is given by

$$P_T = P_i t_{BT} = n(q_r - C) t_{BT} \quad (15)$$

To calculate the profit generated at the time of breakthrough, we shall consider the effect of time value of money and also the effect caused by revenue loss due to oil abandonment in the reservoir as a result of breakthrough.

q_T = Oil production rate per year

Q = initial oil in place bbls

I = discount rate.

Since some of the oil will be abandoned after breakthrough, the recovery factor is given by

$$RF = \frac{\text{total volume of oil recovered}}{\text{oil initially in place}} \quad (16)$$

$$RF = \frac{nq_r t_{BT}}{Q} \quad (17)$$

Considering the time value of money, the profit from the onset of production to the time of abandonment (in years) is given by

$$P_E = P_T Rf \times \text{time value of money} \quad (18)$$

Where time value of money invested

$$C_T = (1 + i)^{-t_{BT}} \quad (19)$$

Thus the equation is expanded to become

$$P_E = \frac{P_i q_r t_{BT}^2 (1+i)^{-t_{BT}}}{Q} \quad (20)$$

But

$$q_T = nq_r \tag{21}$$

And

$$P_i = n(q_r - C) \tag{22}$$

Expanding further, the equation becomes

$$P_E = \frac{n(q_r - C)nq_r t_{BT}^2 (1+i)^{-t_{BT}}}{Q} \tag{23}$$

$$P_E = \frac{n^2(q_r - C)q_r t_{BT}^2 (1+i)^{-t_{BT}}}{Q} \tag{24}$$

Thus P_E is called the discounted economic profit at the breakthrough time given in barrels.

Note that the value P_E is only a relative value and not the absolute value as it helps us to know the value of the flowrate that would yield the greatest profit. The exact value of the profit is not that represented by the value P_E .

2.2. The Optimal Oil Flowrate

The value P_E is a function of the oil production rate. The value continues to change for various oil rate chosen. First it begins to increase for increasing oil rate value until a certain value of oil rate for which the P_E is maximum, and then continuous increment of the oil rate values yield lower values of P_E . The oil production rate that corresponds to the maximum P_E is called the optimal oil production rate since it is the oil rate that yields the maximum economic profit when relatively calculated or even absolutely examined.

The problem is, knowing the oil rate that would be optimal since it has to be determined only by trial incrementing. And the maximum economic returns depends on the engineer’s selection range of the oil rate. For this we make hypothetical assumptions to aid our investigations.

When we plot a graph of P_E against q_r on a Cartesian plane, the resulting plot looks like a normal distribution curve as given below in figure 1.

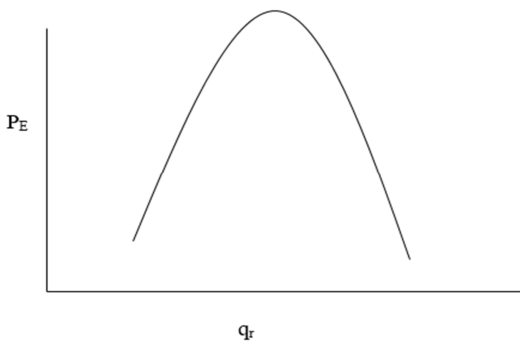


Figure 1. Schematics of the economic profit curve.

To calculate the maximum point, we have to draw two lines tangent to the two sides of the curve and extrapolate it until the tangent lines meet at a point. The point they meet is the theoretical maximum point of the profit. This point can be determined by tracing it value on the graph or from analytical deductions taking into account the direction and movements of

the tangent lines. Tracing the point to the vertical side of the graph gives the value of the optimum economic profit while tracing the point to the horizontal side of the graph gives the value for the optimum oil production rate.

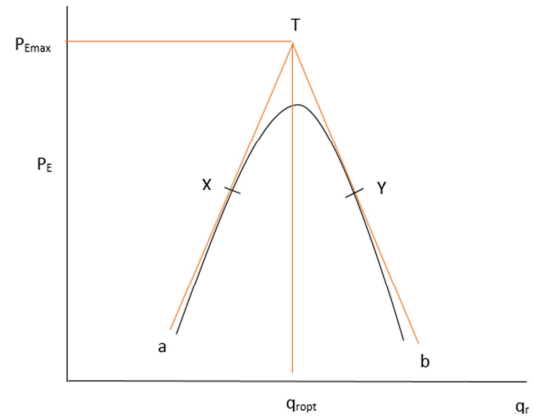


Figure 2. Determination of the maximum economic profit.

Analytical Determination of q_{ropt} .

- a). Find the slope of tangent line a.
- b). Find the slope of tangent line b.

Then PE_{max} is given by the relationship

$$q_{ropt} = X + \left[\left(\frac{\text{slope } a}{\text{slope } a + \text{slope } b} \right) (Y - X) \right] \tag{25}$$

Or

$$q_{ropt} = Y - \left[\left(\frac{\text{slope } b}{\text{slope } a + \text{slope } b} \right) (Y - X) \right] \tag{26}$$

When you have determined the q_{ropt} then read off the value of PE_{max} at the vertical axis of the plot. The vertical axis value of the q_{ropt} value on the extrapolated line is the PE_{max} .

2.3. Model Simulation

Matlab and Excel software were used for the simulation model. The simulation took two steps.

1. The first step is the determination of the critical rate, the daily operating expense, the economic rate and the breakthrough time.
2. The second step is to use this values to further determine the optimum value of the flow rate and its corresponding optimum economic profit.

The reservoir parametres below are used for the simulation of the model. The data was gotten from an oil producing company. Name of company is not disclosed here for confidentiality purpose.

Table 1. Input data.

Parametres	Value
Oil viscosity	0.73cp
Oil density	47.5lb/ft3
Porosity	0.2
Vertical permeability	10md
Horizontal permeability	100md
Thickness of pay zone	50ft

Parametres	Value
Length of perforated interval	15ft
Gas density	0.5lb/ft ³
Radius of reservoir	1000ft
Oil formation volume factor	1.1bbl/stb
Water density	63.76lb/ft ³
Distance from GOC to top of perforation	15ft

3. Result and Discussions

From the formula for critical oil given, it was calculated that the critical oil rate is 20.17 stb/d. it is given in the table 2 below:

Table 2. Table of data showing the critical oil rate.

Parametres	Value
Oil viscosity	0.73cp
Oil density	47.5lb/cuft
porosity	0.2
vertical permeability	10md
horizontal permeability	100md
thickness of pay zone	50cuft
length of perforated interval	15cuft
gas density	0.5lb/cuft
radius of reservoir	1000cuft
oil formation volume factor	1.1bbl/stb
calculated critical oil rate	20.16657stb/d

Table 3. Annual production corresponding to various production rates.

Rate (stb/d)	Time to abandonment (years)	Production per year (bbls/yr)
2000	1	730000
1500	2	547500
1200	4	438000
1000	6	365000
950	8	346750
900	9	328500
750	10	273750
500	17	182500
400	30	146000
390	32	142350
386	32	140890
385	33	140525
350	35	127750
300	40	109500
250	45	91250
200	50	73000
100	120	36500
50	300	18250

3.2. Recovery Factor and Volume Abandonment

At first glance, operators may be tempted to produce at a very high rate. But this is at the expense of losing the well at the very early periods when most of the fluids would be abandoned in the reservoir, except in cases where pressure maintenance is planned. But for the sake of simplicity as in this research which focused on pre-breakthrough time calculation it is pertinent to ascertain the recovery factor corresponding to each choice of flowrate to see the percentage of fluid economically recoverable from the

3.1. Operating Cost of the Well

For the economic performance of the well to be properly determined, it was necessary to determine the operating expenses of the well.

The daily operating expense was determined to be 120stb/d. For the entire one year full operational period, the annual operating cost was 43800stb/d. The value of the operating cost was converted to barrel to aid us to understand the production rate at which economic returns is expected. It was from this that we concluded that the critical oil rate so determined will not yield profit. This is because the critical oil rate was calculated to be 20.17 stb/d while the operating cost of producing it is at 120 stb/d. Producing at the critical rate will maximally delay coning but the operators would be running a loss of about 100stb/d. Since the aim of any business venture is to make profit, the operators prefer to produce at a rate above the critical rate and handle coning problems due to water and/or gas breakthrough later. The issue in the breakthrough is additional cost of production, handling and separation of the displacing phase to get the oil. Most times, there is a balance to this before the appropriate oil rate is chosen.

reservoir before the advent of coning which may lead to shut-in of the well as in the case considered in this work.

The recovery factor is the ratio of the total fluid produced before abandonment to the oil initially in place in the reservoir.

From the table 4 below, it can be seen that for higher oil production rate, the abandonment time is less and thus the volume of fluid abandoned may be higher when compared to lower value of flow rate.

Table 4. The recovery factor corresponding to the flowrate and abandonment time.

Rate (stb/d)	Years to abandonment	Production per year (stb)	Total volume recovered (stb)	Recovery factor
2000	1	730000	730000	0.073
1500	2	547500	1095000	0.1095
1200	4	438000	1752000	0.1752
1000	6	365000	2190000	0.219
950	8	346750	2774000	0.2774
900	9	328500	2956500	0.29565
750	10	273750	2737500	0.27375
500	17	182500	3102500	0.31025
400	30	146000	4380000	0.438
390	32	142350	4555200	0.45552
386	32	140890	4508480	0.450848
385	33	140525	4637325	0.463733
350	35	127750	4471250	0.447125
300	40	109500	4380000	0.438
250	45	91250	4106250	0.410625
200	50	73000	3650000	0.365
100	120	36500	4380000	0.438
50	300	18250	5475000	0.5475

3.3. Annual Profit Generated

The annual profit generated for each flowrate within the period of time from commencement of production to breakthrough of water/ gas is given in table 5 below. When you consider the profit per year in the first year you may get a wrong choice of flowrate, this is because you have not

considered the total profit throughout the period that the flowrate can support. For this case, one may choose 2000stb/d to be the optimum flowrate since it has the highest profit per year. But the choice is found to be misleading if you consider the total profit throughout the period of production and also the economic profit of the well.

Table 5. Table showing profit per year and annual operating cost.

Rate (stb/d)	Years to abandonment	Production per year (stb)	Profit/year (stb)	Annual operating cost (stb)
2000	1	730000	686200	43800
1500	2	547500	503700	43800
1200	4	438000	394200	43800
1000	6	365000	321200	43800
950	8	346750	302950	43800
900	9	328500	284700	43800
750	10	273750	229950	43800
500	17	182500	138700	43800
400	30	146000	102200	43800
390	32	142350	98550	43800
386	32	140890	97090	43800
385	33	140525	96725	43800
350	35	127750	83950	43800
300	40	109500	65700	43800
250	45	91250	47450	43800
200	50	73000	29200	43800
100	120	36500	-7300	43800
50	300	18250	-25550	43800

3.4. The Economic Profit

The economic profit is the adjusted and discounted profit throughout the producing period of the well. It took into account the time value of money and also the recovery factor. From table 6 below, the maximum economic profit occurs at

producing rate of 950stb/d while that for the maximum total profit occurs at a producing rate of 900stb/d. It can be seen that the economic profit yields a value closer to the optimum oil production rate.

Table 6. Table showing the Economic profit and the total profit.

Rate (stb/d)	Years to abandonment	Total profit (stb)	Time value of money	Economic profit (stb)
2000	1	686200	0.869565	43558.78261
1500	2	1007400	0.756144	83410.43478
1200	4	1576800	0.571753	157949.8987
1000	6	1927200	0.432328	182466.8017
950	8	2423600	0.326902	219778.2332
900	9	2562300	0.284262	215341.2832
750	10	2299500	0.247185	155599.8372
500	17	2357900	0.092926	67978.86147
400	30	3066000	0.015103	20282.0127
390	32	3153600	0.01142	16405.2618
386	32	3106880	0.01142	15996.45452
385	33	3191925	0.009931	14699.12491
350	35	2938250	0.007509	9864.913593
300	40	2628000	0.003733	4297.202871
250	45	2135250	0.001856	1627.38872
200	50	1460000	0.000923	491.7605689
100	120	-876000	5.20E-08	-0.019963532
50	300	-7665000	6.18E-19	-2.59E-12

3.5. Sensitivity Analyses

The following plots discuss the effect and relationship of one parameter when compared with another.

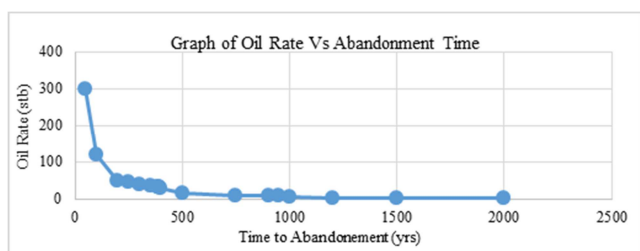


Figure 3. Graph of relationship between oil rate and time of abandonment.

From the plot above it can be seen that the abandonment time increases for decreasing oil production rate. Higher oil production rate will only support shorter periods of well life which may not be sufficient to efficiently and optimally produce the well.

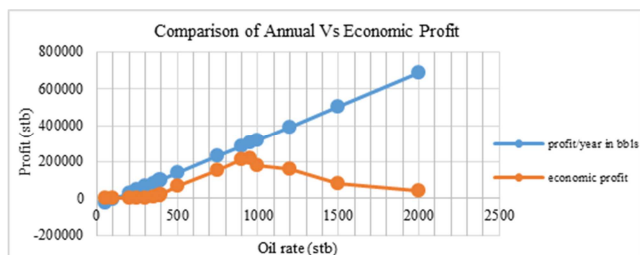


Figure 4. Comparison of economic profit and annual profit.

The plot above depicts the comparison of annual and economic profit. While the annual profit responds with a straight line for increasing oil rates, the economic profit behaves more like a bell shape normal distribution curve approaching a maximum point at its crest. This maximum point corresponds to the optimum oil production rate when traced to the horizontal axis of the graph.

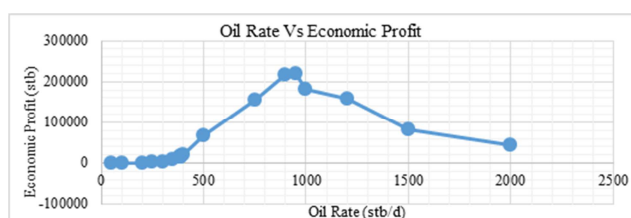


Figure 5. Full view of economic profit vs. oil rate plot.

The view of the plot of economic profit on the oil rate given in figure 5 above reveals that there is an oil rate at which the economic profit is maximum. We call that point the optimum oil production rate. To deduce this point we must trace tangents to the curve and perform some mathematical calculations. From the calculations it was determine that the optimum flowrate was exactly 918.63stb/d.

4. Conclusions

Extensive analyses of production in oil rim reservoirs have been conducted for Niger delta wells. The research was conducted to determine the optimum flowrate. From the results it was realized that:

- i. The oil production rate affects the productive life of the well.
- ii. The economic profit is an important parameter for choice of an optimum flowrate.
- iii. The optimum flowrate is the rate that will yield the highest economic returns throughout the life of the well.
- iv. The economic profit differed from the total profit.
- v. The economic profit is the important parametres for decision making.

Also a model was developed from first principle for the calculation of the economic profit from which the optimum production rate was calculated by considering the nature of the tangents line to either side of the

economic profit curve. From the calculations, the optimum oil production rate occurred at 918.63stb/d. This value gives us the optimum oil production rate for the optimization problem. Thus the oil critical rate which was calculated to be 20.17stb/d was not adequate to yield economic profits from the reservoir.

References

- [1] Aladeitan, Y. M, Akinyede, O. M. (2016). Optimization of Oil Rim Development by Improved Well Design. *Journal of Scientific and Engineering Research*, 3 (4): 169-174.
- [2] Ogolo, N. A., Molokwu, V. C., Oyekonwu, M. O. (2018). Proposed Technique for improved oil recovery from thin oil rim reservoirs with strong aquifers and large gas caps. SPE-189126-MS.
- [3] Idoko, J. J, Saka, M, Lawal, K., (2019). Simple guidelines for screening development for oil-rim reservoirs.
- [4] Ogiriki, S. O, Imonike, G. O, Ogolo, N. O, Onyekonwu, M. O (2018). Optimum Well Type for Oil Rim Reservoirs with large Gas-cap and strong Aquifer. SPE-193411-MS.
- [5] Olamigoke, O, Peacock A., (2009), "First pass Screening of Reservoirs with Large Gas Caps for Oil Rim Development", Paper SPE 128603, Presented at Nigeria Annual International Conference and exhibition Abuja, 3-5 August.
- [6] Ogolo, N. A., Molokwu, V. C., Oyekonwu, M. O. (2018). Technique for effective oil production from the oil rim reservoirs. SPE-193382-MS.
- [7] Obidike, P., Oyekonwu, M. O., Ubani, C. E. (2019). Exploitation of the thin oil rim with large gas cap-critical review.
- [8] Amoni, N., Molokwu, V., Oyekonwu, M. (2017). Proposed Technique for improved oil recovery from thin oil rim reservoirs with strong aquifer and large gas caps. SPE-189126-MS.
- [9] Keng, S. C, Azmukiff, M. K, Nasir, D (2012), "Breaking Oil Recovery Limit in Malaysian Thin Oil Rim Reservoirs: Water Injection Optimization. SPE14157 Presented at the international Petroleum Technology Conference Bangkok. 7-9 March.
- [10] Uwaga, A. O and Lawal K, A (2006). "Concurrent Gas-cap and Oil Rim Production", SPE 105985 presented at the 30th Annual Technical Conference and Exhibition Abuja, Aug 1-2.
- [11] Bourenane, M., Tiab, D and Recham, R. 2004: "Optimization of Perforated Completions for Horizontal Wells in a High-Permeability, Thin Oil Zone—Case Study: Hassi R'mel.
- [12] Silva, J. M. D. and Dawe, R. A. (2010). The Challenge of Producing Thin Oil Rims in Trinidad", *The West Indian Journal of Engineering*, 32, 36-41.
- [13] Onyeukwu, I. H, Peacock, A., Matemilola, S. A (2012), "Improving Recovery from Oil Rim Reservoirs by Simultaneous Gas and Water Injection", Paper SPE 162956, Presented at the Nigerian Annual Technical Conference and Exhibition Abuja, 6-8 August.
- [14] Lyare, U. C. and Silva, J. M. D. (2012). Effect of Gas Cap and Aquifer Strength on Optimal well Location for Thin Oil Rim Reservoirs", *SPETT Energy Conference and Exhibition*, SPE 158544.
- [15] Maroua Jeoua (2019). Optimisation of oil production in an oil rim reservoir using Numerical simulation with focus on IOR/EOR application. SPE-196709-MS.